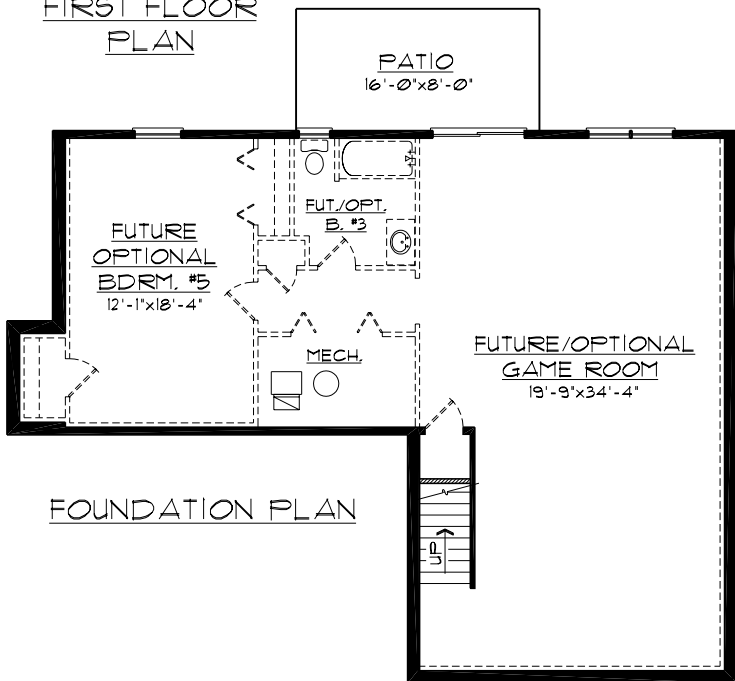
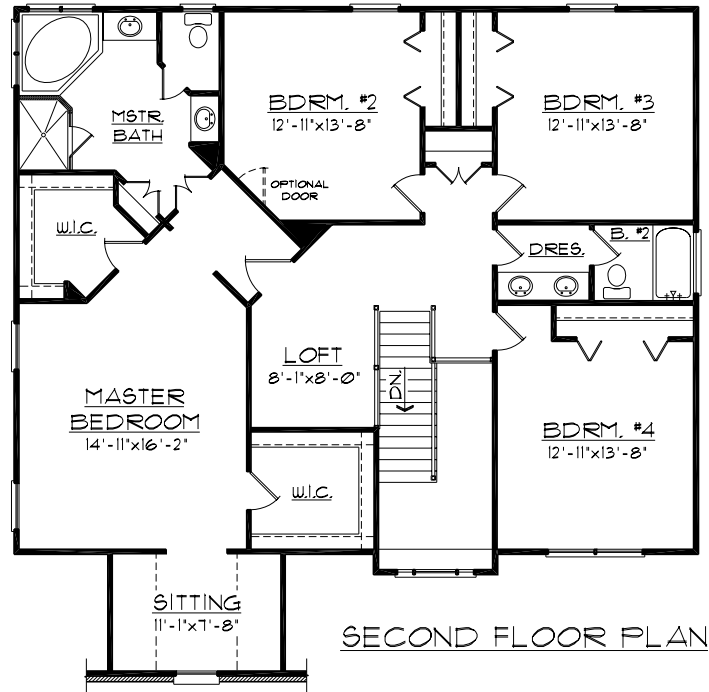
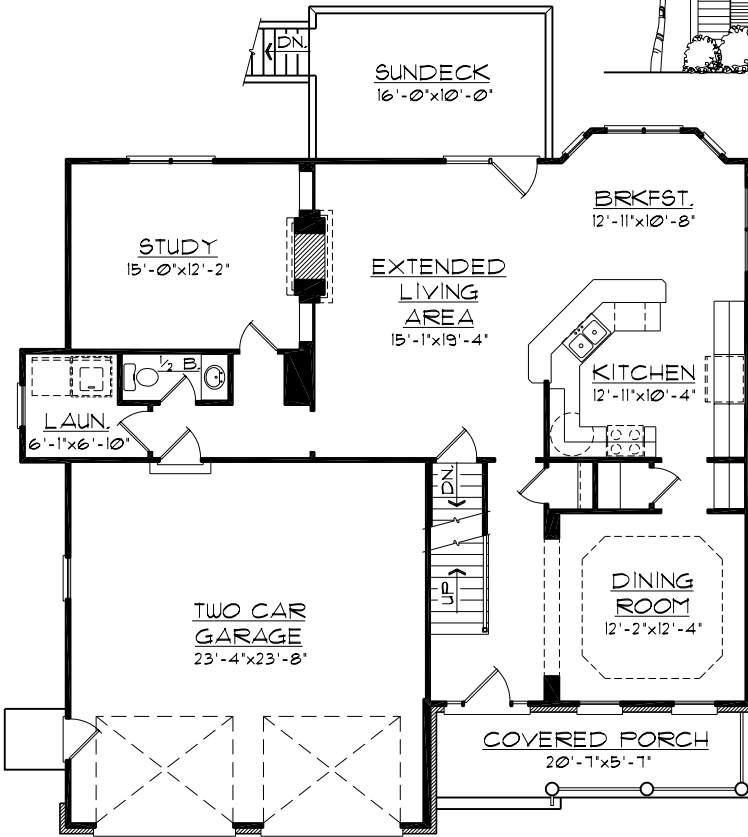


"THE BRIGHTON"

- PLANS AND ELEVATIONS SHOWN ARE A GRAPHIC INTERPRETATION AND ARE SUBJECT TO CHANGE WITHOUT NOTICE.
- CONSULT BUILDERS PLANS FOR ACTUAL CONSTRUCTION DETAILS AND SIZES.



FRONT ELEVATION



1st. FLOOR:	1281 SQ. FT.
2nd. FLOOR:	1724 SQ. FT.
LIVING TOTAL:	3005 SQ. FT.
BASEMENT:	1185 SQ. FT.
GARAGE:	572 SQ. FT.



WALDRON HOMES
ROANOKE, VIRGINIA

4 BDRM. TWO-STORY, ON BSMT.
4846-TS